



January 2026

4-H Family News

Jackson County Connections



Expectation Packets for Small & Large Animal

[Poultry Expectation Packet](#)

[Rabbit Expectation Packet](#)

[Goat Expectation Packet](#)

[Dog Expectation Packet](#)

[Beef Expectation Packet](#)

[Sheep Expectation Packet](#)

[Dairy Expectation Packet](#)

Swine **will be out soon**

These can all be found on our MSU Extension website
under 4-H then [Jackson County Fair](#)



CONTACT US

Hayley Wineland
winela11@msu.edu
4-H Program Coordinator

Jessica Waldron
waldro45@msu.edu
4-H Program Assistant

Gerilyn Darnell
darnel37@msu.edu
Support Staff

PHONE & EMAIL:

(517) 788-4292

msue.Jackson@county.msu.edu

WEBSITE:

<https://www.canr.msu.edu/jackson/4-h/>

Jackson County 4-H Facebook Page:

[https://www.facebook.com/jacksoncoun
ty4h](https://www.facebook.com/jacksoncounty4h)

Michigan State University Extension programs and materials are open to all without regard to race, color, national origin, gender, gender identity, religion, age, height, weight, disability, political beliefs, sexual orientation, marital status, family status or veteran status. Issued in furtherance of MSU Extension work, acts of May 8 and June 30, 1914, in cooperation with the U.S. Department of Agriculture. Quentin Tyler, Director, MSU Extension, East Lansing, MI 48824. This information is for educational purposes only. Reference to commercial products or trade names does not imply endorsement by MSU Extension or bias against those not mentioned.



COUNTY CALENDAR OF EVENTS

JANUARY MEETINGS

Thursday 8th 6:00pm
Pocket Pets
See Flyer For Details

Monday 12th 6:30pm
Horse Council Meeting
MSU Extension Office

Tuesday 13th 6:30pm
Small Animal Association
Expectations Meeting
Regular Meeting Will Follow
MSU Extension Office

Tuesday 20th 6:00pm
Cloverbud Series
See Flyer For Details

Wednesday 21ST 6:30pm
Livestock Association Meeting
MSU Extension Office

Thursday 22nd & 29th
Stained Glass Workshop
See Flyer For Details

Monday 26th 6:00pm
4-H Youth Council Meeting
*Potluck
MSU Extension Office



Association Meetings Are A
Great Opportunity To Meet
With Superintendents To
Discuss Fair Related
Questions, Species Specific
Info, And Expectations
Packets.
Hope To See You There!!

STAY CONNECTED WITH JACKSON COUNTY 4-H



- Jackson County 4-H Facebook Page:
<https://www.facebook.com/jacksoncounty4h>
- Jackson Co. 4-H Small Animal Assoc.
Facebook Page:
[https://www.facebook.com/JacksonCountySm
allAnimal](https://www.facebook.com/JacksonCountySmallAnimal)
- Jackson County 4-H Livestock Assoc.
Facebook Page:
[https://www.facebook.com/JacksonCountyLar
geAnimal](https://www.facebook.com/JacksonCountyLargeAnimal)
- Jackson County Horse Council Facebook
Group:
[https://www.facebook.com/groups/2326019974
73213](https://www.facebook.com/groups/232601997473213)



JACKSON COUNTY 4-H STAINED GLASS SERIES



JANUARY

22

6:30-8:30PM

This beginner stained glass session will introduce you to the basics of cutting, shaping, and designing your own colorful 2D creation.

JANUARY

29

6:30-8:30PM

Ready for more? In this advanced stained glass session, you will add exciting details making your 2D project 3D.

BEGINNER: \$15
BEGINNER +
ADVANCED: \$20



WHO: Jackson County 4-H Youth 10 Yrs Old & Older. Adults Can Join In On The Fun Too!

WHERE: MSU Extension Office
1715 Lansing Ave, Ste 257
Jackson, MI 49202

REGISTER: Email Jessica Waldron at
WALDRO45@MSU.EDU
By January 15th

***YOU HAVE TO ATTEND 1/22
IN ORDER TO ATTEND 1/29**



Jackson County 4-H COOKING AROUND THE WORLD

Get ready to cook, taste, and explore! This 4-H cooking series takes you on a food adventure through South America, Asia, Europe, and Africa — no passport required!

February 4th, 11th, 18th & 25th

6:00pm - 7:30pm

MSU Extension Office

1715 Lansing Ave

Jackson, MI 49202

\$20

Open to all Jackson County 4-H
Members 5-19 years old

To register: Email Jessica
Waldron at
WALDRO45@MSU.EDU

Deadline: February 1st





JACKSON CO. 4-H POCKET PETS & CATS



Got a bird, a reptile, a cat, an ant farm, a gerbil, or another pocket-size pal? Join the club made just for you! Dive into hands-on activities, meet amazing guest speakers, learn how to keep your critter thriving, explore animal-focused careers, and show off your pet at the Jackson Co. Fair!

MEETING DATES:

Jan 8th

Feb 12th

March 12th

April 9th

May 14th

June 11th

TIME:

6PM -7:30PM



MSU EXTENSION OFFICE

**1715 LANSING
AVE, STE 257
JACKSON, MI
49202**



SIGN UP AT
WALDR045@MSU.EDU
FOR MORE INFORMATION
ABOUT 4-H CONTACT

Jessica Waldron
at 517-788-4292



Michigan State University Extension programs and materials are open to all without regard to race, color, national origin, gender, gender identity, religion, age, height, weight, disability, political beliefs, sexual orientation, marital status, family status or veteran status. Issued in furtherance of MSU Extension work, acts of May 8 and June 30, 1914, in cooperation with the U.S. Department of Agriculture. Quentin Tyler, Director, MSU Extension, East Lansing, MI 48824. This information is for educational purposes only. Reference to commercial products or trade names does not imply endorsement by MSU Extension or bias against those not mentioned



JACKSON COUNTY 4-H CLOVERBUDS

JOIN THE FUN!!

- * January 20th - Tie Dye Time
- * February 17th - Chef Cloverbud
- * March 17th - Canvas Painting
- * April 21st- Rock Lab: Explore, Sort, & Create
- * May 19th - Buzz Builders: Inside The World of Bees
- * June 16th- 4-H Council Night (activities the youth council)

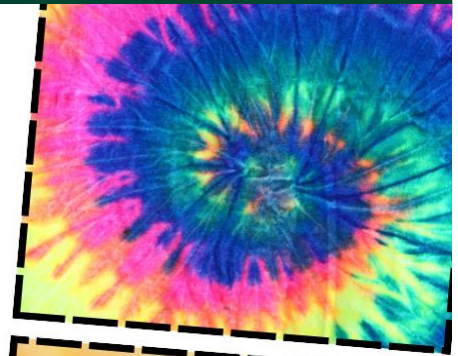
ALL ACTIVITIES ARE
FROM 6-7:30PM
COST \$5 PER ACTIVITY
MSU EXTENSION
OFFICE
1715 LANSING AVE
STE 257
JACKSON, MI 49202

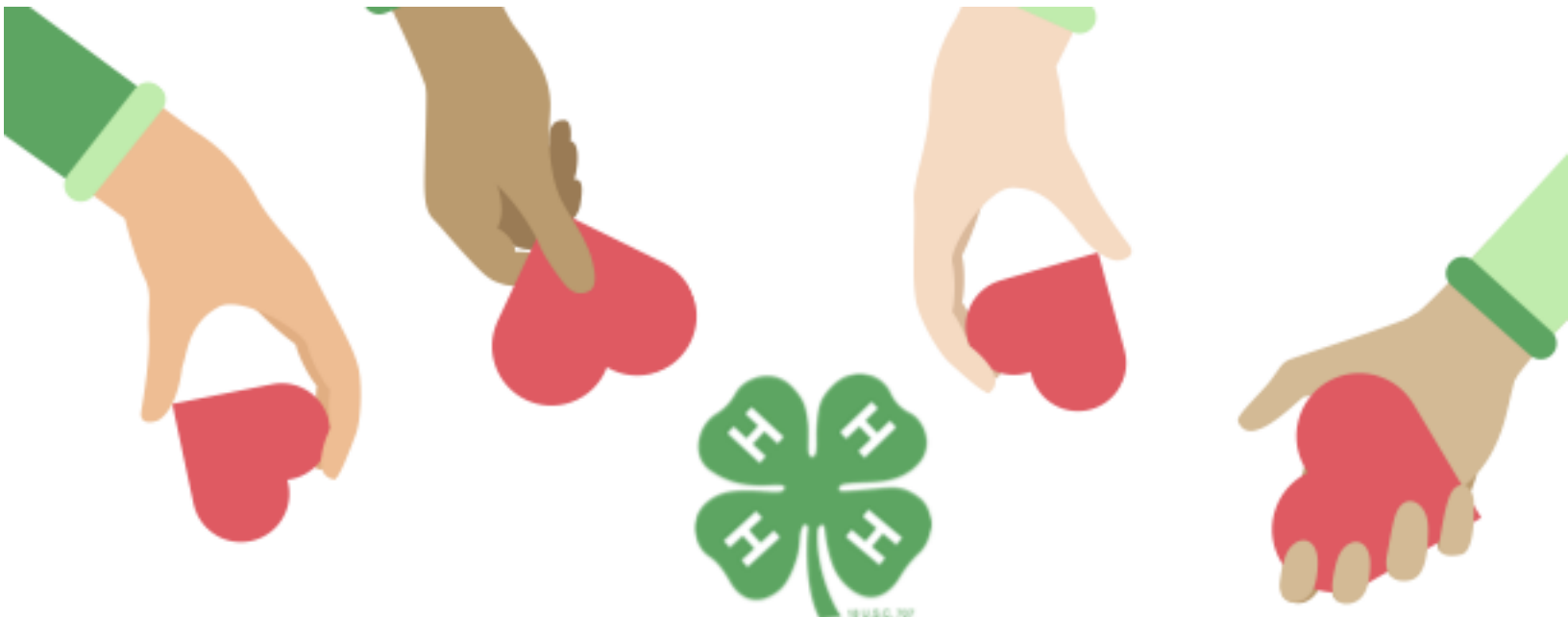
OPEN TO ALL JACKSON
CO. 4-H MEMBERS
5-7 YRS OLD.
FOR MORE INFO PLEASE
CONTACT JESSICA
WALDRON AT
517-788-4292 OR
WALDRO45@MSU.EDU



**REGISTER AT:
WALDRO45@MSU.EDU
BY THE FRIDAY
BEFORE EACH CLASS**

MICHIGAN STATE UNIVERSITY EXTENSION PROGRAMS AND MATERIALS ARE OPEN TO ALL WITHOUT REGARD TO RACE, COLOR, NATIONAL ORIGIN, GENDER, GENDER IDENTITY, RELIGION, AGE, HEIGHT, WEIGHT, DISABILITY, POLITICAL BELIEFS, SEXUAL ORIENTATION, MARITAL STATUS, FAMILY STATUS OR VETERAN STATUS. ISSUED IN FURTHERANCE OF MSU EXTENSION WORK, ACTS OF MAY 8 AND JUNE 30, 1914, IN COOPERATION WITH THE U.S. DEPARTMENT OF AGRICULTURE. QUENTIN TYLER, DIRECTOR, MSU EXTENSION, EAST LANSING, MI 48824. THIS INFORMATION IS FOR EDUCATIONAL PURPOSES ONLY. REFERENCE TO COMMERCIAL PRODUCTS OR TRADE NAMES DOES NOT IMPLY ENDORSEMENT BY MSU EXTENSION OR BIAS AGAINST THOSE NOT MENTIONED





MAKING THE BEST BETTER S.E. MI 4-H VOLUNTEER SERIES

January 29th 2026 6:30 PM

Join the Conversation: Tips for
Engagement from Seasoned
Volunteers

Live at Monroe Ext. Office or Virtual

February 12th 2026 6:30 PM

Cha-ching
Making Cents of 4-H Finances
Live at Livingston Ext. Office or
Virtual

February 26th 2026 6:30 PM

Join the Conversation: Engaging
Parents & 4-H Alums in 4-H Experiences
Live at Washtenaw Ext. Office or Virtual

March 12th 2026 6:30 PM

Youth Engagement &
Engaging Youth Voice
Live at Lenawee Ext. Office or Virtual

March 26th 2026 6:30 PM

From Clash to Collaboration Practicing
the Art of Conflict Resolution
Live at Jackson Ext. Office or Virtual

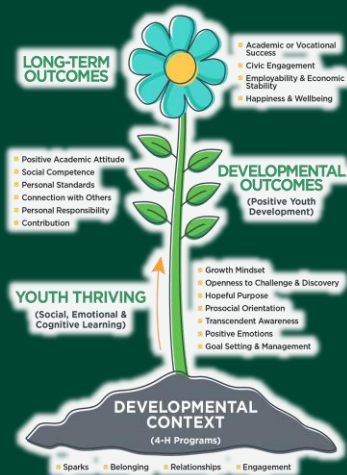
RSVP HERE!
**[HTTPS://BIT.LY/
D12VOLUNTEER](https://bit.ly/d12volunteer)**

FOR MORE INFORMATION: Contact Jenny Speyer at speyerje@msu.edu



STATEWIDE CALENDAR OF EVENTS

4-H Thriving Model of Positive Youth Development



Relationships are the foundation of a successful 4-H program! These relationships include building friendships with other members and leaders, building great working relationships and trust between program leaders and members, and adult leaders working together to organize great opportunities for youth.

We hope you can find others in the 4-H program in which you can build positive friendships and/or mentorships. Join us for any events and meetings to get to know everyone in the program.

Youth thriving is the first step in building youth who are #BeyondReady! Contact your local 4-H staff for more information.

January 13: Wild Spartans

Online

This month's session is "Nature's Detectives: How Insects Help Solve Crimes Against People, Animals and the Environment through Forensic Entomology." Tiny creatures can tell BIG stories about the world around us: explore creepy-crawly clues and learn how science and nature work together to solve puzzles. Ask questions through a live Q&A. This free virtual series is for youth ages 12-19.

www.canr.msu.edu/events/4-h-wild-spartans-january

January 13: Avoiding Money Mishaps

Online

In today's digital world, young people are increasingly targeted by fraudsters, scammers and predatory lenders. This interactive webinar will empower youth with the knowledge and tools to protect themselves and their personal information.

www.canr.msu.edu/events/avoiding-money-mishaps-jan13

January 21: Adulting 101 – Fraud Fighters: How to Stay Scam-Free

Online

From fake jobs offers to phishing texts, scammers are everywhere. This workshop breaks down the latest tricks and shows you how to guard your info, your credit, and your peace of mind.

<https://www.canr.msu.edu/events/adulting-101-2026>

January 24: 2026 State 4-H Rabbit and Cavy Show and Expo

Farm Bureau Pavilion, Lansing

4-H'ers exhibit rabbit and cavy projects and participate in educational knowledge contests: showmanship, skillathon, breed identification and rabbit hopping. **Register by January 14.**

www.canr.msu.edu/events/2026-state-4-h-rabbit-and-cavy-show-and-expo

January 26: Michigan 4-H Volunteer Webinar Series: Beyond Ready Basics

Every great 4-H experience has a few powerful ingredients—and volunteers play the biggest role in making them happen. Explore the four vital elements that help youth thrive: discovering sparks, feeling a sense of belonging, building developmental relationships, and staying meaningfully engaged.

www.canr.msu.edu/events/michigan-4-h-volunteer-webinar-beyond-ready-basics-bringing-the-vital-elements-to-life-in-your-4-h-club

February 7: 4-H Winterfest

Eagle Village Retreat Center, Hersey

4-H Winterfest is a hand-on learning camp for youth ages 8-12. Youth pick workshops and participate in team building activities. Come and have fun this winter! **Register by January 23.**

www.canr.msu.edu/events/2026-winterfest





COUNTY 4-H NEWS



Small Animal Association Needs A Superintendent



Small Animal Sweepstakes Co-Superintendent

We have an open position for the Jackson County 4-H Small Animal Sweepstakes Co-Superintendent. If you are interested, please follow the links below

for the superintendent job description and the application.

Applications will be accepted through January 9th at 5pm.

[Jackson County 4-H Superintendent Job Description](#)

[Jackson County 4-H Superintendent Job Application](#)

Beef Pre-Fair Check In

New for 2026: Beef Pre Fair Check In/DNA drop off will be from Monday, February 2nd, through Friday, February 6th, at the Jackson County MSU Extension Office.

All materials are due by Friday, February 6th at 5:00pm

Office Hours (M-F): 8:00am-5:00pm

Lunch Closure (M-F): 12:30pm-1:30pm

Extended Hours: Monday & Wednesday evenings (office will be open late)

Here is the link for the Beef Pre-Fair Check In Form-

https://docs.google.com/forms/d/e/1FAIpQLSeGZ56zeKxpT1QLCfKyzh6sNI2iWRQWC3QvVAMpPx62R4_5tA/viewform

The form will email you a copy of your submission. You may fill it out early and review or update it before the deadline, if needed.

Early drop off is welcome, including at January Association Meetings****



COUNTY 4-H NEWS

Local Approach to Discussion-Based Disaster Exercises and Readiness Training

LADDER TRAINING

*Local Approach to
Discussion-Based Disaster
Exercises & Readiness*

**FEBRUARY 20
9:30-3**

MSUFCU
3899 COOLIDGE RD.
EAST LANSING, MI 48823



MICHIGAN STATE UNIVERSITY | Extension



Disasters don't just affect people — they impact animals too. Consider attending the LADDER training to strengthen your community's disaster preparedness by including animals in emergency planning. This discussion-based exercise brings together Extension educators, emergency managers, veterinarians, livestock producers, and more to build innovative, whole-community solutions. Registration is \$25 and includes all training materials and lunch.

Registration is now open: <https://events.anr.msu.edu/LADDERLansing/>

Let's climb the LADDER to better preparedness — for everyone.

Do you need to get certified as a pesticide applicator or renew an expired license?



This winter, join MSU Extension at one of the 28 in-person testing opportunities across the state. March 4 MSU Extension Jackson will host a review (1715 Lansing Ave, Jackson, MI). There will be a review of core materials followed by the Core exam. Aerial and Fumigation category exams also available. Review session fee \$25. 4 RUP.

To register for the Jackson event or any of the other sessions, visit <https://events.anr.msu.edu/2026pesttest/> or call the Jackson Extension office 517-788-4292



COUNTY NEWS

Hay Production 101

MICHIGAN STATE UNIVERSITY | Extension



Hay Production 101

Tuesdays & Thursdays, 7-8:30 p.m.
February 24 – March 12, 2026

Register today: <https://events.anr.msu.edu/2026HayProduction101/>

RUP & CCA Credits Available

MSU Extension Hay Production 101 online short course

Everything you need to know
to get started growing hay

Registration is open



Take the 2026 Forage Extension Needs Assessment!



The MSU Extension Forage Team is surveying Michigan forage producers / grazers and professionals to assess industry needs.

bit.ly/forageneeds

- This feedback helps improve existing programs and create new ones.
- All responses remain confidential.



STATEWIDE 4-H NEWS



Register for Michigan 4-H Capitol Experience!

At Michigan 4-H Capitol Experience, teens learn how to change the world for the better through engagement in Michigan's state government and public policy process. The program is scheduled for March 15-17, in Lansing.

The three-day event, open to high-school-aged youth, includes tours of the Michigan Capitol, interactions with state legislators, meetings with state agency staff, lobbyists and state-level experts and learning how policy is made. During the program, youth work in small teams to draft legislation on: agriculture; civil rights and youth advocacy; crime and law enforcement; education and teacher retention; environment and natural resources; health; and jobs, the economy and infrastructure.

The cost to attend is \$365, which includes lodging at the Okemos Conference Center. Please contact your local 4-H program coordinator to inquire about local funding opportunities. To learn more and/or find the link to register, visit www.canr.msu.edu/4_h_capitol_experience/.

Earn prizes with the Michigan 4-H Cash Composition Contest

Did you know youth are being targeted by scams too? That's this year's theme for the 2026 Michigan 4-H Cash Composition Contest! Michigan youth aged 9–19 are invited to participate through writing an essay on this year's question.

Top entries receive a \$100 gift card, thanks to contest sponsor, Extra Credit Union. MSU Extension will host two webinars to help with fraud awareness and essay writing. Essays are due by March 1. For contest details and essay submission information, visit: www.canr.msu.edu/4-h-money-smarts/money-smart-kids-contest.



Apply for the Michigan 4-H State Awards!

Michigan 4-H true leaders ages 10 and older have an opportunity to be recognized for the great work they do in 4-H and develop their career skills by completing a state award application. A Michigan 4-H State Award is the highest honor bestowed on a Michigan 4-H member and provides an opportunity to receive recognition for their engagement in rich learning experiences that result in outstanding knowledge and life-skill development.

State award applications are divided into four categories: Mark of Excellence contest (10-11 years), junior state award (12-15 years), senior state award (16-19 years) and group awards (13-19 years). An Achievement Award was added last year for 18–19-year-olds. Each application and selection process varies, dependent on the applicant's age.

More information about the Michigan 4-H State Award process and Mark of Excellence Contest can be found online at bit.ly/stateaward. Applications are due April 1. For more information, contact your 4-H program coordinator or email Betty Jo Krosnicki at nashbett@msu.edu or Janice Zerbe at rajzerj@msu.edu.



Fair Prep

BECAUSE IT'S NEVER TOO EARLY TO START PREPARING

How To Market Your 4-H Livestock Project



Want to Rock Your 4-H Auction Experience?

Learn how to market your project like a pro, attract potential buyers to the auction, and write a thank you card that really stands out (because it should be more than just "thanks for supporting me")!

Check out these helpful links for tips, ideas, and inspiration to make the most of your 4-H journey!



[HTTPS://WWW.CANR.MSU.EDU/YOUTH_BUSINESS_GUIDE_TO_SUCCESS/4-H-ANIMAL-PROJECT-MARKETING-RESOURCES/BEEF](https://www.canr.msu.edu/youth_business_guide_to_success/4-h-animal-project-marketing-resources/beef)

[HTTPS://WWW.CANR.MSU.EDU/YOUTH_BUSINESS_GUIDE_TO_SUCCESS/4-H-ANIMAL-PROJECT-MARKETING-RESOURCES/SHEEP-GOATS](https://www.canr.msu.edu/youth_business_guide_to_success/4-h-animal-project-marketing-resources/sheep-goats)



[HTTPS://WWW.CANR.MSU.EDU/YOUTH_BUSINESS_GUIDE_TO_SUCCESS/4-H-ANIMAL-PROJECT-MARKETING-RESOURCES/SMALL-ANIMAL](https://www.canr.msu.edu/youth_business_guide_to_success/4-h-animal-project-marketing-resources/small-animal)

https://www.canr.msu.edu/youth_business_guide_to_success/4-h-animal-project-marketing-resources/general-marketing-resources

**SHOWMANSHIP/
SWEEPSTAKES
PACKETS**

**POULTRY
DAIRY GOATS
MEAT GOATS**

**RABBITS
DOG OBEDIENCE**

**HORSE
SHEEP
MARKET BEEF**

**SWINE
DAIRY**

JACKSON COUNTY FAIR 2026 DATES AUGUST 9TH – 15TH